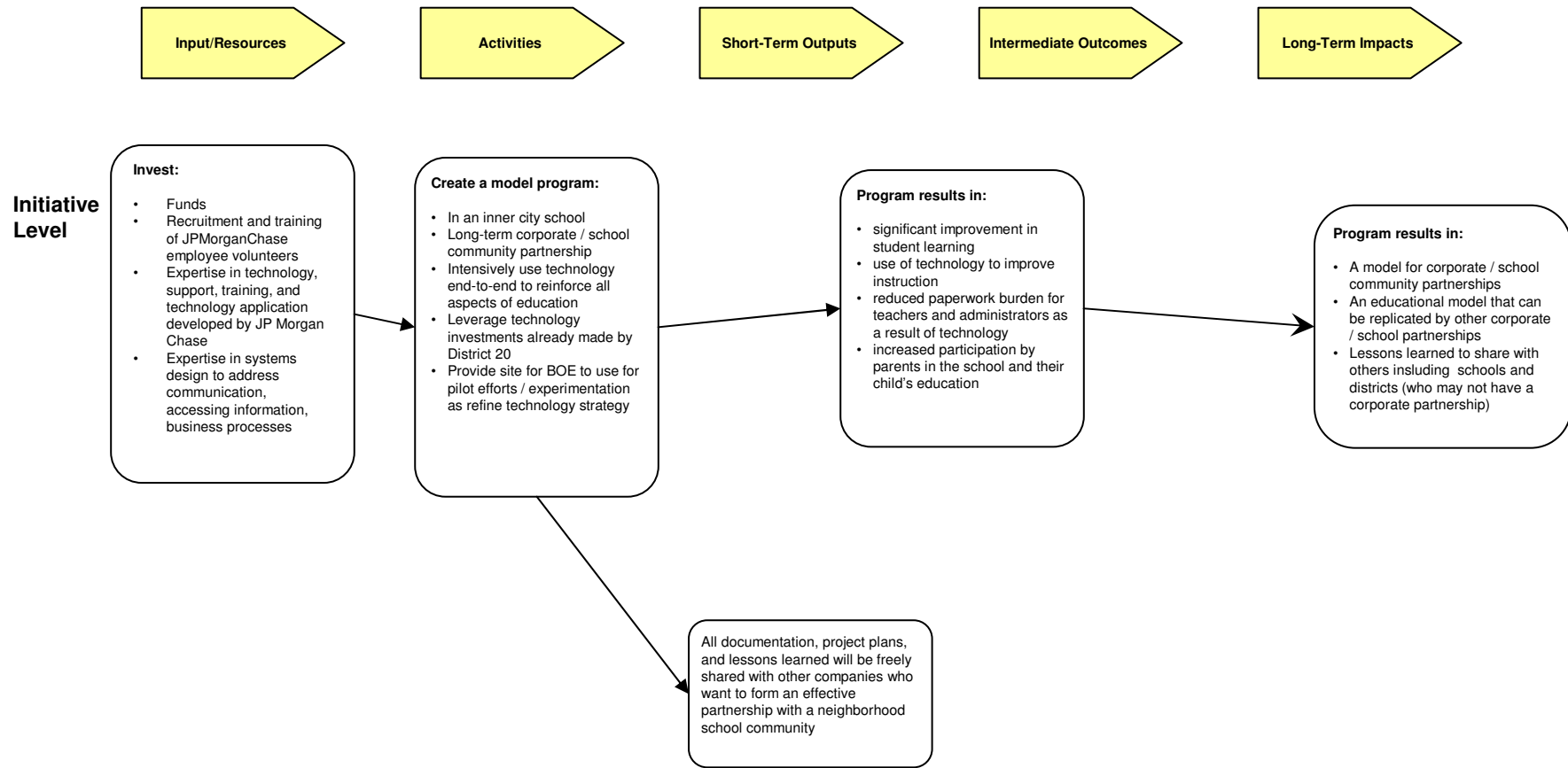


# A Study of the ON\_DEC Initiative Theory of Change



**Input/Resources**

**Activities**

**Short-Term Outputs**

**Intermediate Outcomes**

**Long-Term Impacts**

**SCHOOL AND CLASS-ROOM**

**ON-DEC to provide:**

- Hardware and software for teachers, staff, and students
- Training
- On-site support
- Help-desk
- Participation in planning efforts
- Administrative support for initiative

**School to provide:**

- Buy-in and support from principal
- Buy-in and support from teachers and staff
- Hardware, software, training provided by District 20 and BOE
- Activities related to technology, professional development, and instructional improvement from other initiatives
- Time and effort from teachers and staff
- Coordination with other initiative and projects

- Training for teachers, staff on use of standard office applications, e-mail, Internet browser

- Professional development activities to encourage use of technology in teacher's everyday work

- Develop Intranet and Network systems to reduce paperwork for teachers and administrators

- Develop Intranet and Network systems to facilitate sharing of data, lesson plans, resources

- Training for teachers, staff on use of standard office applications, e-mail, Internet Browser

- Develop reward and incentive system for teachers to encourage use
- Develop reward and incentive system for parents to encourage use

- Establishment of Network teams to facilitate end-to-end technology infusion

- School open more hours for more education and training opportunities for parents and community

- Students trained in use of technology

- Parents trained in use of technology

- Teachers become proficient in technology use, becoming comfortable with basic application software and exploring uses of technology

Better communication between--

- Diltas Teachers
- Teachers -- staff
- Parents -- teachers
- Students -- teachers
- Students
- Diltas teachers -- teachers and experts across the city and country

- High level of support for network and users make staff feel respected

- Teachers and staff have access to data and gain efficiencies by moving away from paper based processing and recordkeeping

Teachers use technology to:

- Prepare and share lesson plans
- Communicate with school community via email
- Complete administrative tasks
- Post homework assignments
- Post information for parents

- Students demonstrate technology proficiency

Students use home PCs to:

- Do homework
- Research on internet and PC encyclopedia
- Email teachers and other students about homework and school events
- Post/send homework assignments
- Practice basic literacy/numeracy skills

- Students feel special because of the program
- Students feel respected because of the level of support

- Parents demonstrate technology proficiency
- Parents access/monitor student homework via Web

Teachers incorporate technology into classroom instruction to:

- Support and enrich their students' experience
- More freely engage their students

- Change in teaching methodology--more interdisciplinary, project-based

- Teachers can effectively use technology to garner teaching resources and classroom materials

Teachers develop greater sense of community—

- More meetings and better attendance
- More collaborative projects
- More joint planning
- More sharing of discoveries and experiences

School community takes ownership of network content and on-going activities initially provided by ON-DEC

- Students strengthen basic literacy and numeracy skills

- Reduced student mobility
- Reduced behavioral incidents
- Increased homework completion and enhanced quality of homework
- Increased attendance

Increased parental involvement—

- With school
- With child's education

- Parents use technology to access adult learning courses
- Parents acquire computer skills useful for employment

- Higher teacher satisfaction
- Reduced teacher turnover
- Greater competition for openings at Diltas

- Students achieve at higher levels

A learning environment producing graduates who are—

- truly literate
- Competent in core subjects
- Community of life-long learners